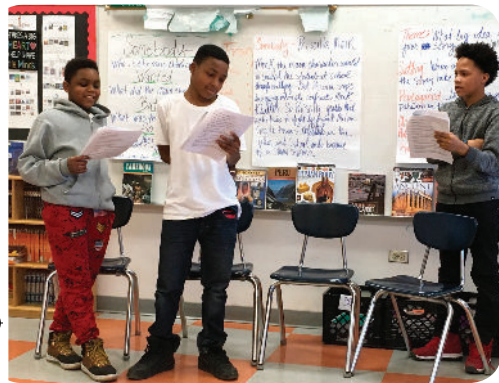


Teaching Tangible Empathy

The act of crafting a play is fundamentally an exercise in empathy and problem-solving—how does it feel to be in this character's position? What should your character do in order to overcome the challenges ahead? To find out, you must inhabit the character and write about them believably.

As with any skill, empathy behaves like a muscle; with use, it grows strong. EPIC serves as the regimen by which students exercise this muscle, increasing their capacity to see the world from a compassionate point of view.



"EPIC was a great and interesting experience that caused me to think more openly and be open-minded towards other peoples experiences."

—6th grade student, Columbia Explorers Academy

"Students made tremendous progress in terms of being able to understand where others were coming from and to be more thoughtful in words and actions toward others."

—7th Grade ELA Teacher, Crown Community Academy

Who participates in EPIC?

EPIC is designed for 6th-12th grade classrooms in a variety of subject areas including:

- English/ELA
- History and social studies
- Visual and performing arts
- Social emotional learning
- English language learner classrooms*

*Silk Road Rising has a number of multilingual teaching artists

Bring EPIC to your school!

Are you interested in bringing EPIC to your school or getting more information?

Email tracy@silkroadrising.org
or call 312-857-1234 x204.

Check out our website:

www.LearnPlaywriting.org



Improve your **Creative Schools Certification** with EPIC today!
Silk Road Rising is an approved CPS vendor. CPS Vendor Number: 68933

EPIC+

This program is also available for adults.
Contact Tracy Strimple for more information.



EPIC is a program delivered by Silk Road Rising.

EPIC



Empathic Playwriting Intensive Course

EPIC is an arts integrated residency program designed to guide students in developing and practicing empathy while writing a personally meaningful story as a short play or monologue.

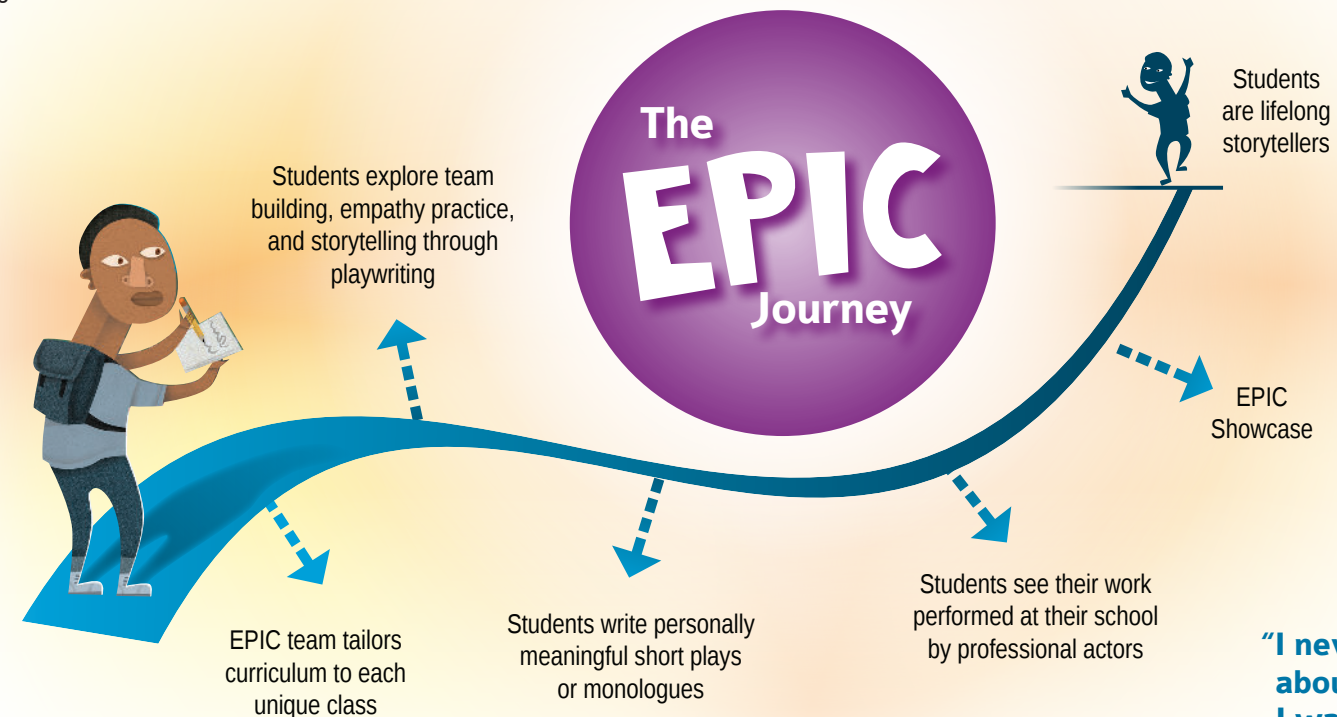


About Our Teaching Artists

EPIC teaching artists are Chicago-based professional playwrights and actors with extensive teaching experience. Our teaching artists collaborate with classroom teachers to tailor the EPIC curriculum to meet the specific needs of each class.

“Our teaching artist was awesome. He was energetic, approachable, understanding, and dedicated. He worked really well with the students and was always flexible in accommodating the needs of each student.”

—7th Grade English Language Arts Teacher,
Skinner West Elementary



“I think the experience of seeing and hearing their work read aloud by professionals was really important. Many of them don't think their work is good, even when it is, and seeing other people take their writing seriously and invest some energy into it made them feel like their creative work mattered.”

—High School Theatre Teacher,
Hancock High School



Sharing EPIC

At the end of each residency, professional actors travel to the participating schools and perform the student written plays and monologues for the students. After that, one EPIC playwright from each participating class gets chosen to have their play performed by professional actors at the twice annual EPIC Showcase on Silk Road Rising's stage in the Loop. The EPIC students see their plays come to life and enjoy recognition from a paying audience.



“I never knew anything about playwriting until I was introduced to EPIC. It inspired me to be more creative and think more outside of the box. I've learned a few words can mean so much. I would love to have this experience again.”

—11th grade student, Kelvyn Park High School

Theatre Objectives Overview

With EPIC, students will:

- demonstrate and practice empathy.
- complete and revise a play or monologue.
- write using clear motivations and differing perspectives.
- explore conflict and conflict resolution in stories and in real life.
- identify the need for change on a personal and/or global issue.

EPIC and the Common Core

The EPIC curriculum is designed to meet multiple Common Core Standards in writing, speaking and listening, and reading. EPIC also meets many of the anchor standards for the Illinois Arts Learning Standards in Theatre and many of the Illinois Learning Standards for Social Emotional Learning.